

BACKGROUND

The HIV-1 p24 protein is derived from a precursor polyprotein of HIV, p55, that is cleaved into shorter polypeptides namely p24 (core), p17 (matrix) and p7/p9 (nucleocapsid) proteins. The p24 protein is nonglycosylated and is of approximately 24 kDa size. The protein forms the core of the virus and encapsulates the viral genetic code.¹ p24 antigen plasma level is a good survival and AIDS progression marker in HIV-infected patients.² HIV-1 p24 monoclonal antibody provides a very useful tool for detection of p24 proteins.

References:

1. Freed, E. O., Somat Cell Mol Genet 26:13, 2001.
2. Schupbach, J., Int Arch Allergy Immunol 132:196, 2003.

TECHNICAL INFORMATION

Source:

Anti-p24 is a mouse monoclonal antibody raised against recombinant HIV-1 p24 protein.

Specificity and Sensitivity:

Anti-p24 reacts specifically with HIV-1 p24 protein in Western Blot applications.

Storage Buffer: PBS and 30% Glycerol.

Storage:

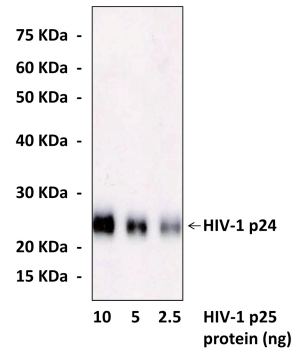
Store at -20°C for at least one year. Store at 4°C for frequent use. Avoid repeated freeze-thaw cycles.

APPLICATIONS

Application:	*Dilution:
WB	1:1000
IP	n/d
IHC	n/d
ICC	n/d
FACS	n/d

**Optimal dilutions must be determined by end user.*

QUALITY CONTROL DATA



Detection of HIV-1 p24 proteins in Western blot by HIV-1 p24 (36C8) Monoclonal Antibody.

